

822 INKE93

LIBRARY
INTERNATIONAL REFERENCE CENTRE
FOR COMMUNITY WATER SUPPLY AND
SANITATION (IRC)

S.E.U. (SOUTH) KOLLAM

TOWARDS A SUSTAINABLE STRATEGY IN WATER & SANITATION:

CORE GROUPS.

: 1993 :

KW: Kerala; inst. dev.; city man.; city org.; piped water supply; sanitation; local;
cost-recovery; monitoring; evaluation;

822-INKE93-12336

TOWARDS A SUSTAINABLE STRATEGY III WATER & SANITATION:

CORE GROUP

<u>Content</u>	<u>Page No.</u>
1. Background and development of a concept :	1
2. Objective & Structure (Organisation Set-up CG) :	1 2
3. Functioning :	3 - 4
4. Participatory Evaluation :	5 - 7
5. A recent initiative of Core Group: Sanitation Mart :	7 - 8
6. Tentative Plan of phasing of SEU's Support & Emergence of Core Group's Central Role :	9 - 14.

LIBRARY, INTERNATIONAL REFERENCE
CENTRE FOR COMMUNITY WATER SUPPLY
AND SANITATION (IRC)
P.O. Box 93190, 2509 AD The Hague
Tel. (070) 814911 ext. 141/142

ISBN 12336

822 INKE93

Towards a Sustainable Strategy in Water & Sanitation: CORE GROUPS

1. Background & development of a concept.

Thrikkunnappuzha, a single panchayath scheme) was the first to get water (1988) among the 16 panchayaths where SEU (SOUTH) is active, and as such its involvement in this panchayath had been more varied and relatively long. These various Water & Sanitation related activities, as it enhanced peoples involvement also helped develop Ward Water Committees which are quite committed, capable and confident. It was found in the course that the WWCs of Thrikkunnappuzha has gone a long way toward 'enabling people and their local institution to plan and participate in activities related to W. & S. and hygiene education. It was at ^{this} stage that developing sustainable strategies to contribute to and enhance the sector was given serious consideration and CORE GROUP is one such initiative.

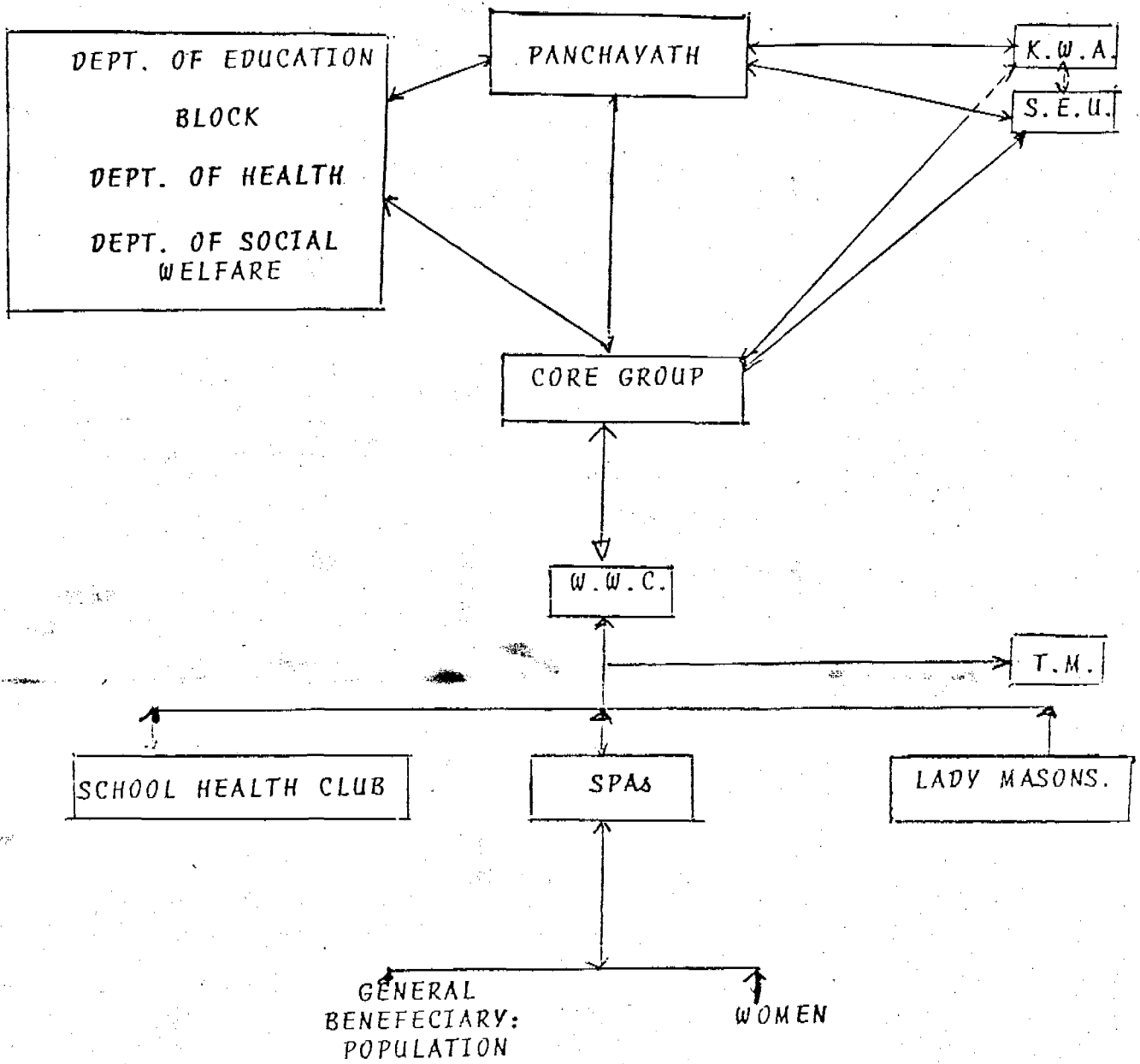
2. Objective and Structure.

Core Group, a 20 member vanguard group of WWCs is selected (two from each committee) ~~as~~ a consensus by all WWCs and panchayath body. It is envisaged that Core Group would progressively take more and more responsibilities of Water & Sanitation from SEU (who will gradually withdraw) in a systematic and phased manner, so that the level of activities/organisations ^{reached} would be maintained/further improved in time to come under the overall supervision of panchayath body and in collaboration with related agencies and departments.

The organisation-structure of ongoing activities in the panchayath and the position/role of Core Group within it, is depicted in the chart that follows.

more relevant

ORGANISATION SET UP : CORE GROUP



The formation of Core Group was preceded by formal meetings of panchayath - CG - SEU to decide guidelines for the functioning of CG * and roles/responsibilities of Core Group and panchayath on the one hand, and to arrive at areas of future support needed from SEU, on the other **. These in the form of an agreement were placed before a formal panchayath meeting which approved it as a resolution of the panchayath.

Functionally, Core Group is divided into three: sanitation related, WATER related and ORGANISATION related. Though the above are overlapping categories, the demarcation was necessary for reasons of structuring responsibilities and, to some extent catering to the aptitudinal preference of members. This arrangement in the course of events proved extremely useful on both counts and especially useful for accountability during monthly evaluation.

3. Functioning.

For the past one year Core Group had been either independently planning and carrying out or helping WWCs towards it in quite few areas, which were previously done by field Organisers of SEU. Chief among them are:-

- # Beneficiary Selection (SAN).
- # Supervising quality of materials & Construction. (SAN)
- # Handling of Hygiene classes (WATER & SAN).
- # House visits (WATER & SAN).

* Guidelines are listed in the second column of the Table on page ..

** Tentative plan of phasing out of SEUs support and its gradual withdrawal is attempted on page ..

- # Ongoing cleaning activity, (Water Tap surroundings).
- # Supervising 'Small repairs' (Taps - water).
- # Overseeing reporting of defects (Water).
- # Overseeing WWC meeting (Organisation).
- # Selection of trainees for training (Organisation).
- # Organising contribution (Water - drainage).
- # Placing monthly report in panchayath (Organisation).
- # Organising Joint activities with related agencies (Organisation).

Joint activities with other agencies deserves some special mention here. For instance, Core Group with Literacy groups * celebrated the ONAM festival ** in a very innovative manner. Largely attended by local people and representatives of all related departments, the function powerfully utilised the occasion for communicating Water & Sanitation messages, among other things.

Regular monthly meetings evaluated the extent of target achieved and problems thereof with reference to monthly programme planned. Programme planning and evaluation report are placed before the panchayath body for approval/information respectively.

During the early monthly meetings it was reported that Core Group faced some problems of "acceptance" but as time passed its status in panchayath (among beneficiaries and panchayath members) has enhanced so remarkably that as remarked by a beneficiary, it is like, "there are many Field Organisers".

* A local groups working all over Kerala with the aim of 100% literacy for the state.

** Onam is the most famous annual celebration of Kerala calling forth the memories of a mythical past when everyone was just, healthy and contented. (SEU's long term objective!!).

4. Participatory Evaluation.

Records of past performance of Core Group though commendable, it has few areas of activities which needs improvement. Although monthly evaluations used to bring up problems faced, a proper focus on them was never attempted systematically until last month when a three day (residential) participatory evaluation, was conducted *.

Among other things ** there was a session to evaluate the realisation of aims of Core Group, based on its prescribed guidelines. Information tabulated is presented in the table overleaf.

* Conducted in SIRD, Kottarakkara, it was attended by all Core Group members plus the President of the panchayath and few elected members. Field Organisers of SEU (Central) and SEU (North) also participated as observers.

** Development & Peoples participation, Women, Water & Sanitation, Unsolved problems, Planning 'Sanitation Mart', Interim Evaluation.

PRESCRIBED: An Evaluation (During Participatory evaluation Training conducted

: 6 :

at SIFD, Kottarakkara on September 23, 24, 25 1993.

S/No.	Guidelines (Roles & Responsibilities) / Evaluations.	Very Satisfactory	More/less Satisfactory	Not Satisfactory	Remarks.
1	Carryout activities of W.& S in Panchayath	15	5	-	More recognition of CG by all parties will be useful (8).
2	Suggestions of CG to be approved by Panchayath	15	2	3	
3	Voluntary involvement of CG	15	5	-	Income generating activity needed. (8) Personal interest create some problems (4).
4	Organize peoples contribution	2	18	-	People are only slowly realizing its importance (10) Poor people (10)
5	Present activity-report in panchayath committee for which CG is invited.	19	1	-	
6	Organise Inter agency Collaboration	8	10	2	Satisfactory with KWA, but to be improved with ICDS & PHC (12)
7	Continue strengthening WWC	16	2	2	
8	Emphasise non-political content	14	5	1	Party politics sometime interfere (6)
9	Teamfeeling among members	17	2	1	
10	Monthly discussion by CG of proposal/ report to be placed in Panchayath body	15	4	1	
11	Never to overlook panchayath	12	-	2	Selected members should give better co-operation (7).
12	Timely guidance to WWC	17	2	1	
13	Planning & Target realisation within time line.	7	11	2	Members have job & family commitment (10) Target realization of sanitation a problem (10)
14	Real and increased participation of women	14	6	-	Help of men in certain aspects unavoidable (6) Women are not coming forward wholeheartedly (5) Men should co-operate more (7)

Significantly three areas stand out waiting further improvement viz. Organising Peoples contribution (S.No.4), Organising Inter agency collaboration (S.No.7) and Target realisation (S.No.13). As the table is self explanatory, an elaboration is not attempted here.

5. A recent initiative of Core Group : 'SANITATION MART'.

The present picture understandably is that the existing resource restraint do not allow sanitation coverage to be anywhere near the decade target outside the project areas. As the subsidy linked programme, thus, leave many deserving Household without latrines, initiatives for other approaches are called for. 'Sanitation Mart' is one such strategy. An important assumption behind this is that there would be a number of Households willing to build latrines themselves (without waiting for Govt. subsidy) if proper technical guidance is made available and supply of materials are provided at reasonable prices.

It is known that Sanitation Marts, though few in number (northern states), have demonstrated successfully its usefulness as an alternate strategy for larger coverage without subsidies.

With this background in mind Core Group have started thinking in time of taking up SM. Core Group is now a body who are more or less well versed in all aspects of Sanitation. Preparatory activities for the above initiative (Contacting Unicef, Inform^{ing} Director of Panchayath, Planning exposure trip to one of the functioning SM, Preparation of questionnaires for survey of neighbouring panchayaths etc.) is already begun.

By the way SEU has in its POI (93 - 94) a programme of training masons in 3 - 4 neighbouring panchayaths for the propagation of low cost latrine outside project area. This will be an opportunity for linking it with Sanitation Mats.

Since the whole thing is in its preliminary stage, further thinking and planning like the possibility of registering Core Group as a society, its link ups with panchayath, its link up with other sanitation programme (Block etc.), supports necessary etc.. are to be done now.

6. Tentative Plan of phasing out of SEU's Support and Emergence of Core Group's Central Role:

- Water Related
- Sanitation
- Organisation & Training

The representation of tentative plan (overleaf) is evident in itself. In addition to the tabular part, 'A List of specific Activities' (to be taken up by SEU within the time line proposed) together make the section complete.

TENTATIVE PLAN OF PHASING OUT OF SEU'S SUPPORT AND EMERGENCE OF CG'S CENTRAL ROLE: WATER RELATED

SEU (S) KOLLAM.

I. Towards sustainability (Situation reached)					Activities	Time line for SEU to help CG reach a Sust. Situation (Yrs.):	II. Sustainability established						
Pt.	CG	SEU	KWA	Dept./ Agency		1 Year	2 Yrs.	3 Yrs.	Pt.	CG	KWA	Dept./ Agency	Supporting Structures
**	-	***	+	-	Site Selection & Mapping	-----			*	***	*	-	*
+	**	**	**	-	Reporting for effective O. & M.	-----			**	***	**	-	*
-	-	*	**	-	Cost Recovery	-----			**	***	**	-	*
*	**	**	*	-	Repair by Community	-----			*	***	**	-	*
*	**	***	*	*	Community managed Scheme	-----			***	***	*	*	*
*	**	**	-	*	Hygiene Education	-----			*	***	**	*	**
*	**	***	-	-	Monitoring & Evaluation	-----			*	***	**	-	**

High Input : ***
 Medium Input : **
 Low Input : *
 No Input : -

For Specific Activities
 to achieve the above,
 See list attached. #

Supporting structures:

- Sanitation cell
- Sanitation wing (SEU)?
- Sub division committee (MD's circular No.29/93 LAD)
- (Others) Forthcoming institutionalisation measures. (To Coordinate Socio-Economic Aspects)

TENTATIVE PLAN OF PHASING OUT OF SEU'S SUPPORT AND EMERGENCE OF CB'S CENTRAL ROLE: SANITATION.

SEU(S) KOLLAM

I. Towards sustainability (Situation reached)					Activities	Time line for SEU to help CB (reach a Sust. Situation (Yrs.))#			II. Sustainability established				
Pt.	CB	SEU	KWA	Dept./ Agency		1 Year	2 Yrs.	3 Yrs.	Pt.	CB	KWA	Dept./ Agency	Supporting (Structures)
**	**	**	-	-	Pre construction activities:	-----			***	***	-	*	*
*	**	**	-	*	Health Education	-----			**	***	-	*	*
*	*	***	-	-	Construction	-----			***	**	-	-	**
*	*	**	-	-	Post construction Activities.	-----			**	***	-	**	*
*	**	**	-	-	Monitoring & Evaluation	-----			**	***	-	*	**
-	*	*	-	-	Sanitation cart	-----			*	***	-	*	*

High Input : ***
 Medium Input : **
 Low Input : *
 No Input : -

For Specific Activities
 to achieve the above,
 See list attached. #

Supporting structures:

- Sanitation cell
- Sanitation wing (SEU)?
- Sub division committee
(MD's circular No.28/93 LAD)
- (Others) Forthcoming institu-
tionalisation measures. (To Co-
ordinate Socio-Economic Aspects)

TENTATIVE PLAN OF PHASING OUT OF SEU'S SUPPORT AND EMERGENCE OF CB'S CENTRAL ROLE: ORGANISATION & TRAINING

SEU(S) KOLLAM

I. Towards sustainability (Situation reached)					Activities	Time line for SEU to help CB reach a Sust. Situation (Yrs.)	II. Sustainability established						
Pt.	CB	SEU	KWA	Dept./ Agency		1 Year	2 Yrs.	3 Yrs.	Pt.	CB	KWA	Dept./ Agency	Supporting Structures
					Organisation								
**	**	*	-	-	WNC Meetings & Evaluations	_____			**	***	*	-	**
**	*	***	-	*	Inter Agency Collaboration	_____			**	***	*	**	-
-	**	***	-	-	School Health Club				*	***	-	*	**
					Trainings								
*	**	***	-	-	WNC	_____			*	***	*	-	**
-	**	***	-	-	SPR	_____			*	***	*	-	**
*	*	***	-	-	Mason	_____			**	**	-	*	**

High Input : ***
 Medium Input : **
 Low Input : *
 No Input : -

For Specific Activities
 to achieve the above,
 See list attached. #

Supporting structures:

- Sanitation cell
- Sanitation wing (SEU)?
- Sub division committee
(MD's circular No.28/93 LAD)
- (Others) Forthcoming institutionalisation measures. (To Coordinate Socio-Economic Aspects)

LIST OF SPECIFIC ACTIVITIESWATER RELATEDSite Selection

- : To make Core Group to well acquainted with the distribution system and prepare them to take up activities expected of an involved community group.

Reporting

- : -Training of Trainers :
- Helping Core Group have more liaison with KWA.
- System to be perfected and thus improving the service level.

Community Management & Cost Recovery.

- : -Steps towards enhancing an enabling political environment.
- clarifying the roles and responsibilities of all parties. (KWA, CG & Panchayath).
- Intensifying the campaign: People should pay for water.
- Fixing tariffs with peoples participation.
- Developing structures/training the personnel etc., for establishing a system for local management.
- Establishing a collection unit - women.
- Establishing a O. & M. Unit.
- Further developing a perspective on the need, advantages and scope of community management in water & Sanitation among the community and agency.

Repair by Community

- : -Increasing the number of Trained members and improving the quality of work (skill).
- Arrangement for easy access of materials to trained members.

Hygiene Education

- : -Training of Trainers.
- Enhancing participation of departments.
- Developing an Education kit.

Monitoring & Evaluation

- : -Increasing the awareness to use the results of evaluation and monitoring for improvement of the system, as an educational activity. and.
- Also to assess the impact of the programme.

SANITATION:Pre Construction activities

- : -Liaison with other agencies like CAPART, BLOCK Etc. (Sanitation funding agencies.)
- Further developing affordable low cost options.
- New attempts to get larger contribution from panchayath as matching fund.
- and motivating panchayath to start budget line for sanitation.

Health Education

- : -Training of trainers.
- Enhancing participation of departments.
- Developing an Education kit.

Construction

- : -Creating quality masons in sufficient number who are well versed in the techniques of low cost construction and socially involved.
- Giving emphasis to women masons.
- Construction as educational opportunity.

Post Construction Activities

- : -Heightening the awareness and skill to handle post construction activities. (Participatory Training, Supporting materials).

Monitoring & Evaluation

- : -Increasing the awareness to use the results of evaluation and monitoring for improvement of the system, as an educational activity, and also to assess the impact of the programme.

Sanitation Mart

- : 1. Discussion session on the scope and potentialities of Sanitation Mart.
- 2. Study and Survey of neighbouring panchayath to make sure feasibility of such an endeavour.

3. Disseminating information on successful Sanitation Mart and exposure trips.
4. Liaison with related departments (CAPART, BLOCK, MATSYAFED, UNICEF, Directorate of Panchayath) for support and acceptability.
5. Starting viable structures of the organisation (Women unit).
6. Developing expertise, skill to take up different responsibilities. (Office management Book keeping and accounting).
7. Helping to train masons, purchase of materials, location of office etc.
8. Attempt to start production of materials like (packets of bleaching powder, Brush, Soap.)
9. Assessment and monitoring of the functioning of the Sanitation Mart.

ORGANISATION AND TRAINING

WJC Meetings & Evaluation

- : -Further developing skills in organisation and management.

Inter Agency Collaboration

- : -Further strengthening the net working agencies by participating in joint activities and joint training.

-Systematising and ensuring attendance of Core Group in agencies meetings.

School Health Club

- : -To help to efficiently carry out the activities of School Health Club independently (Planning, implementing and evaluation).

Training WJC & SPA

- : -To build up a team of trained members to take up training at local levels.

Masons

- : (See Sanitation Mart.)