

COMPREHENSIVE SCHOOL HEALTH

Presentation

By

JOSEPH, A. ONWONG'A

PROGRAM OFFICER (SCHOOL HEALTH)

(Tel. 0722468500, e-mail: jonwonga03@gmail.com)

DIVISION OF CHILD & ADOLESCENT HEALTH

MOPHS

27TH.OCTOBER 2010

BACKGROUND

- Total population..... 40,863,000
- School aged population....10,624,380
- School going children 8,661,333
- Children out of school..... 1,963,047
- Population at risk of STH..... 9,108,952
- School aged 2,368,237

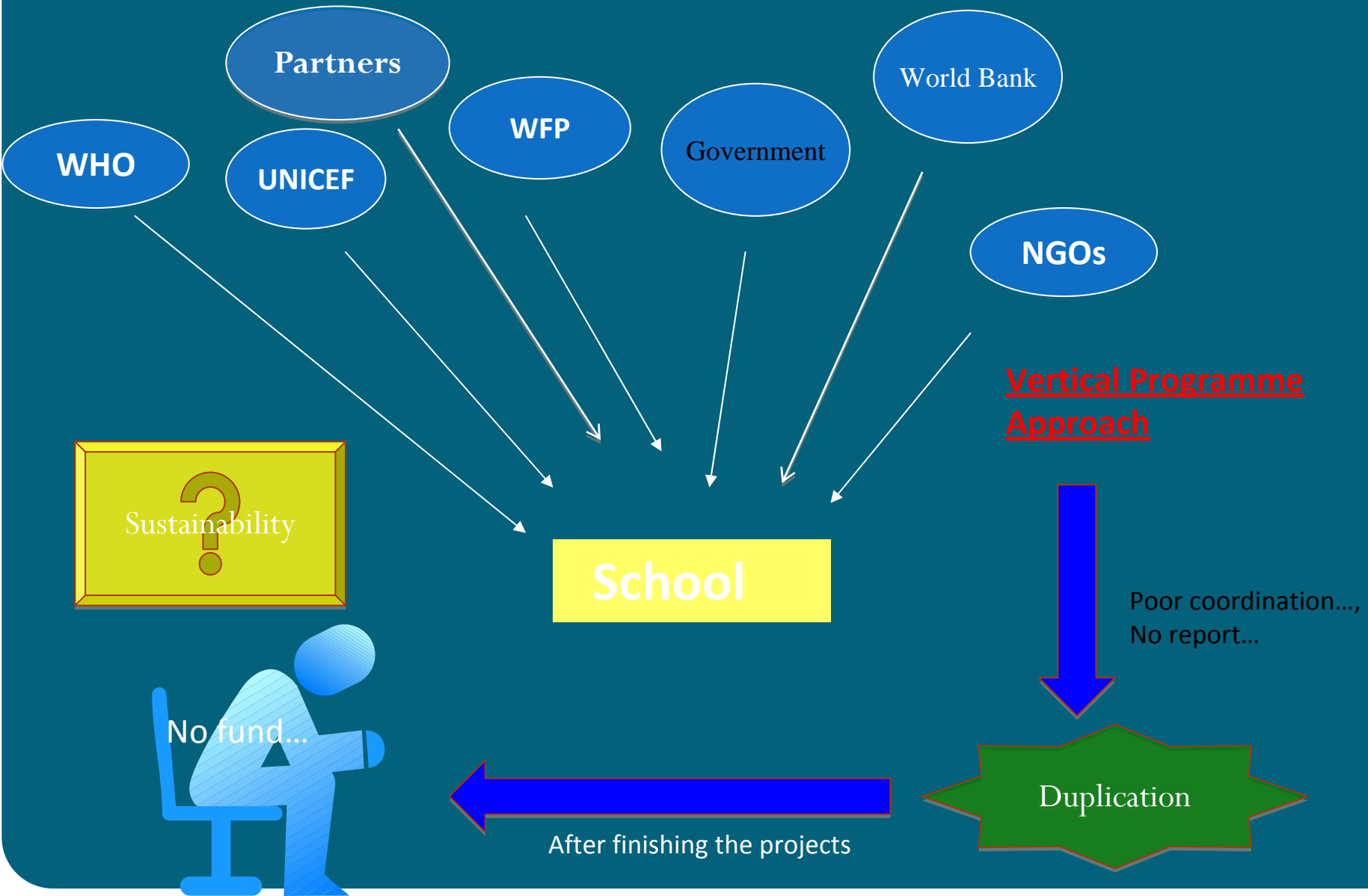
School health

- Children aged 5-19 constitute 48% of the pop.
- This age group suffers varying but significant degree of ill health & morbidity that affect learning
- central to these challenges are; parasitic infections, water related health problems malnutrition, Hiv/Aids/STI, obesity, teenage pregnancy, sexual harassment, drug abuse among others

Why worsening situation?

- To answer this question, the government in partnership with JICA hired a consultant in 2003.
- Among the TOR's were to carry out situation analysis, and make recommendations

Present situation on School Health



ISSUES IDENTIFIED

- Poor coordination
- Duplication of activities
- Interventions not sustainable
- Wastage of resources
- Lack of sharing of information
- Poor reporting
- Increasing disease prevalence other health related conditions & poor school performance.

Root causes

- Lack of policy and guidelines
- Inadequate community involvement and participation
- Weak tracking systems for evidence based planning
- Targeting wrong /or few interventions (lack of integrated approach)
- Use of top-down vertical programmatic approach

Recommendations

- Implement comprehensive school health programme
- Develop policy and guidelines on comprehensive school health

Recommendations cont.....

- Strengthen coordination of school health interventions by relevant Ministries, communities and other stakeholders
- Ensure mechanisms are put in place for sustainability of school health programmes
- Facilitate effective monitoring and evaluation of school health programmes.

Milestones

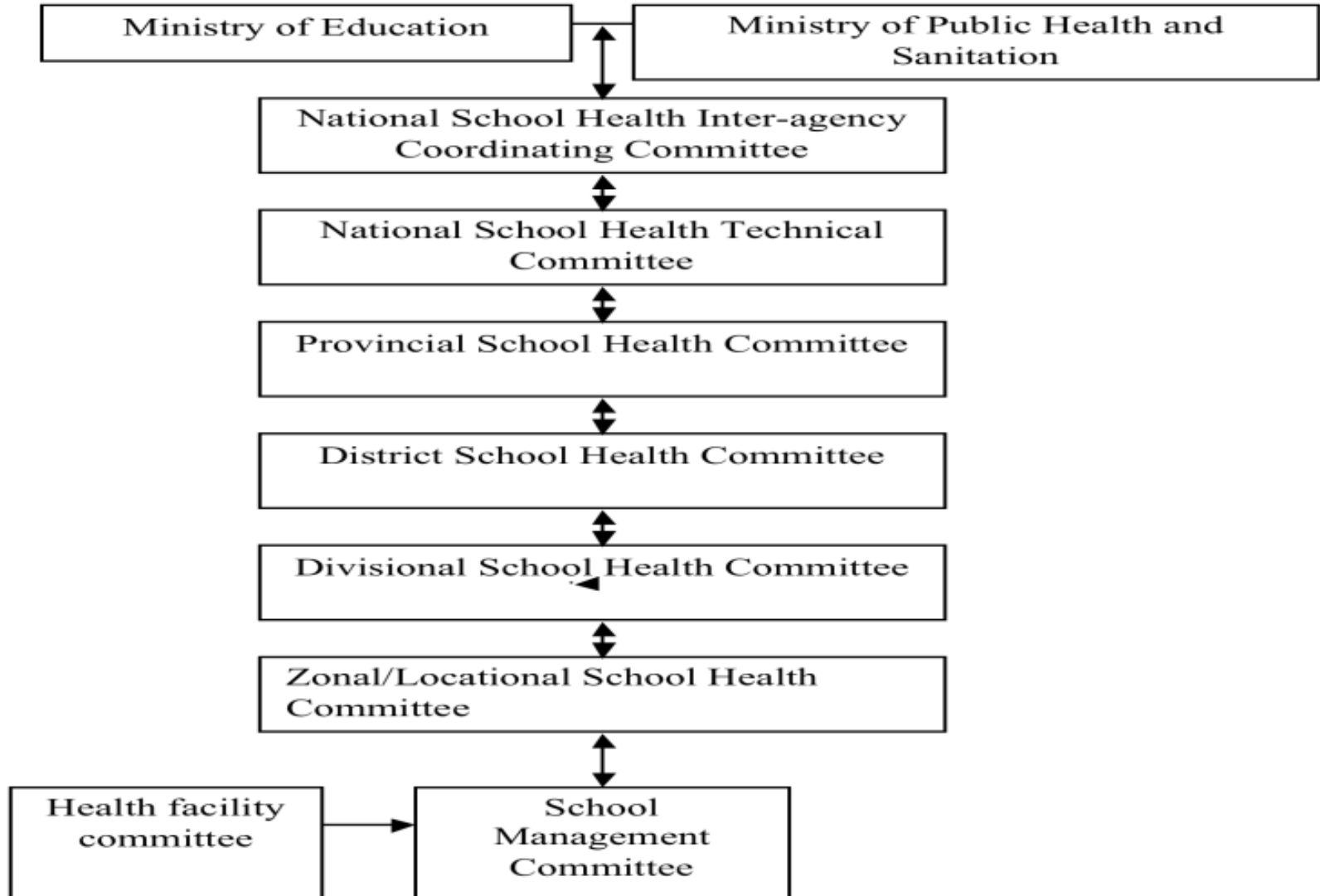
- Coordination mechanism in place
- Policy and guidelines developed and complete
- Dissemination is in progress
- Strategy and implementation framework in progress
- Implementation handbook in draft form
- Documentary in progress

Recommendations cont.....



-How can we put a policy into action?-

School Health Programme Coordination



National School Health Inter-Agency Committee

- ❑ The Ministries responsible for Health; Education, Home affairs, Agriculture, Planning, Local Government, Social Services, Information and other relevant line ministries and other stakeholders.
- ❑ The committee will be responsible for coordination, resource mobilization and advocacy.
- ❑ The committee will be chaired by Permanent Secretary Ministry of Education.

National School Health Technical Committee

- The Ministries responsible for Health, Education, Water and Irrigation, Home Affairs, Agriculture, Planning, Local Government, Social Services, Information, Public Works and other relevant line ministries and other stakeholders.
- The Committee will be responsible for monitoring health trends, related legislation changes, health programmes and for providing technical advice to the School Health Steering Committee (SHSC).
- The committee will be chaired by the Permanent Secretary Ministry of Public Health and Sanitation.

Health Facility Committee

- The health facility committee will be responsible for the schools in its catchment area. The community health extension workers(CHEWs) will be the link between the health facility and schools.

School Management Committee

- The School Management committee will be comprised of the Head Teacher (HT) as the secretary, the chairman and the treasurer who will be drawn from the Parents' Association, representatives from the District Education Board (DEB), the sponsor, a special needs education specialist and the Ministry of Public Health and Sanitation.

Launch of the National School Health Policy & Guidelines(05/08/2009)



Dissemination of the National School Health Policy and Guidelines

- Coast Province(22/2/10)
- Nairobi Province(26/2/10)
- Nyanza Province(13/9/10)
- Rift Valley (South) province(16/9/10)
- Western province 29/09/2010



Dissemination of policy & Guidelines at district level

- Malindi 20/09/2010
- Kaloleni 21/09/2010
- Kinango 22/09/2010
- Kwale 23/09/2010
- Msambweni 24/09/2010
- Kilifi 27/09/2010

Strategy & implementation framework

- A strategy and implementation framework are in draft form

Kenya comprehensive school health implementation Handbook

- Kenya comprehensive handbook for implementers is at its final stages of finalization.
- A documentary on the pilot is in progress

Evaluation of comp.sch. Health.

- 30 schools selected for piloting
- 20 in kilifi, 10 in Msambweni
- The activity started on 11/10/2010 to end on 26/10/2010

END

THANK YOU

HOOKWORM

- Kenya

12.5 (4-33, 0, 100) (847)

- Nairobi

- -

- Central

- 15.1 (1-50, 0, 100) (173)

- Eastern

- 0.0 (0-0, 0, 0) (17)

- Nyanza

- 17.6 (8-33, 0, 91) (349)

Rift Valley

- 1.3 (0-7, 0, 30) (23)

Coast

5.1 (1-13, 0, 44) (176)

North Eastern

5.3 (3-11, 0, 41) (58)

Western

79.4 (65-85, 31, 95) (51)

A. lumbricoides

- KENYA -14.3 (3-36, 0, 91) (842)
- NAIROBI -
- CENTRAL-15.0 (1-46, 0, 75) (176)
- COAST- 9.1 (2-29, 0, 69) (173)
- EASTERN- 3.2 (1-9, 0, 27) (50)
- N. EASTERN- 0 (0-0, 0, 2) (17)
- NYANZA- 18.5 (7-37, 0, 91) (352)
- R. VALLEY- 0.9 (0-12, 0, 43) (21)
- WESTERN- 32.0 (25-55, 0, 89) (53)

T. trichuira

- KENYA- 6.9 (2-20, 0, 98) (785)
- NAIROBI- -
- CENTRAL- 0.9 (0-2, 0, 20) (161)
- COAST- 15.7 (6-40, 0, 98) (163)
- EASTERN- 1.8 (1-3, 0, 32) (47)
- N. EASTERN- 0.0 (0-0, 0, 1) (15)
- NYANZA- 11.9 (4-20, 0, 71) (329)
- R. VALLEY- 0.3 (0-2, 0, 13) (20)
- WESTERN- 40.2 (29-70, 9, 96) (50)

S. haematobium

- KENYA- 23.3 (6-50, 0, 98) (625)
- NOAIROBI- -
- CENTRAL- -
- COAST- 33.5 (13-59, 0, 98) (391)
- EASTERN- 6.8 (3-20, 0, 67) (24)
- N. EASTERN- 3.0 (0-11, 0, 44) (15)
- NYANZA- 10.4 (0-30, 0, 92) (194)
- R. VALLEY- 0.0 (0-0, 0, 0) (1)
- WESTERN- -

S. mansoni

- **KENYA-** 8.0 (1-25, 0, 100) (661)
- **NAIROBI-** -
- **CENTRAL-** 10.5 (1-46, 0, 94) (128)
- **COAST-** 0.0 (0-0, 0, 62) (79)
- **EASTERN-** 32.1 (6-64, 0, 98) (73)
- **N. EASTERN-** -
- **NYANZA -** 8.5 (2-19, 0, 98) (312)
- **R. VALLEY-** 0 (0-5, 0, 22) (25)
- **WESTERN-** 15.3 (7-38, 1, 100) (44)